

## Sizes and configurations for every application.

Exclusively from Sandhill Scientific, ComforTec® PLUS single-use pH reflux monitoring probes are the perfect choice for every application. Available in both adult and pediatric sizes, these probes are designed for optimal ease of insertion.

Small in diameter, ComforTec® PLUS pH probes are made from specially-formulated polyurethane, which softens in response to body temperature to optimize patient comfort. The large easy-to-read depth markings up to 70 cm eliminate the need to calculate the depth of insertion. Both infused and non-infused catheter models are available.

All probes come in a standard 8-pin configuration, are latex-free and available in custom configurations.

### ComforTec PLUS pH Probes (Single-Use)

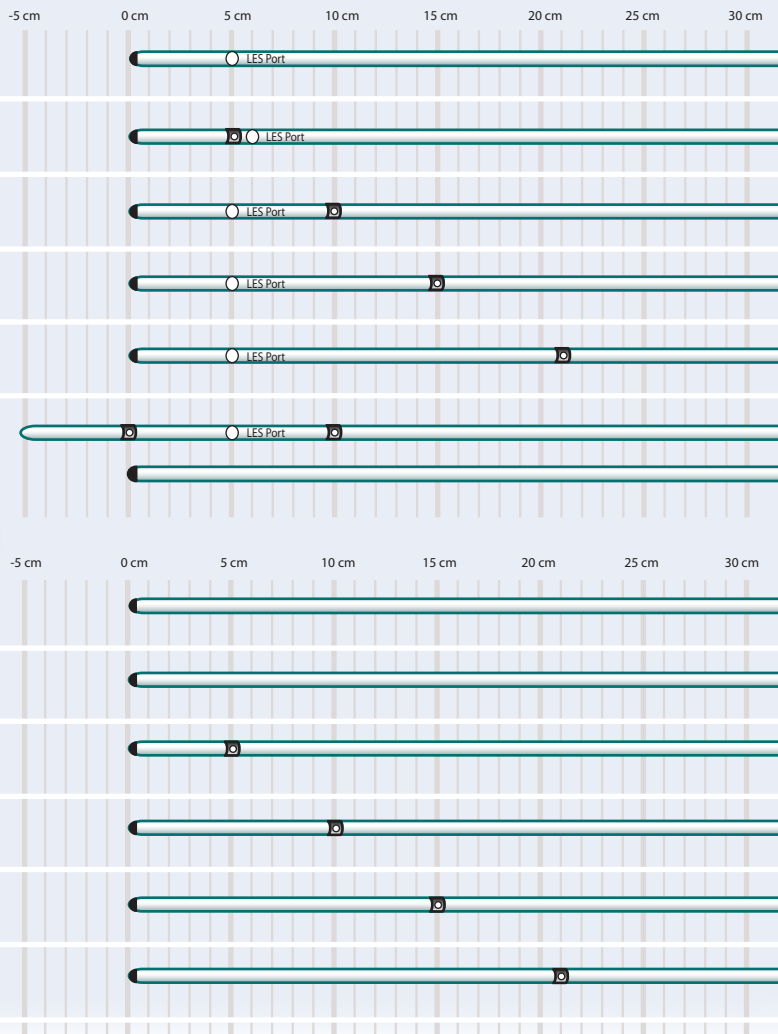
#### Internal Reference

##### Infused

PHIS	Single pH channel, diameter 6.9 FR / 2.3 mm.
PHI5	Dual pH channel, 5cm spacing, diameter 6.9 FR / 2.3 mm.
PHI10	Dual pH channel, 10cm spacing, diameter 6.9 FR / 2.3 mm.
PHI15	Dual pH channel, 15cm spacing, diameter 6.9 FR / 2.3 mm.
PHI21	Dual pH channel, 21cm spacing, diameter 6.9 FR / 2.3 mm.
PHI10-V	VariTEC, Bifurcated, 10 cm spacing on proximal branch and single channel on distal branch, infused on proximal branch, diameter 6.9 FR / 2.3 mm. Distal branch diameter 5 FR/1.67 mm.

##### Non-Infused

PHNS-P	Single pH channel, pediatric, diameter 5 FR / 1.67 mm.
PHNS	Single pH channel, diameter 6.4 FR / 2.13 mm.
PHN5	Dual pH channel, 5cm spacing, diameter 6.4 FR / 2.13 mm.
PHN10	Dual pH channel, 10cm spacing, diameter 6.4 FR / 2.13 mm.
PHN15	Dual pH channel, 15cm spacing, diameter 6.4 FR / 2.13 mm.
PHN21	Dual pH channel, 21cm spacing, diameter 6.4 FR / 2.13 mm.



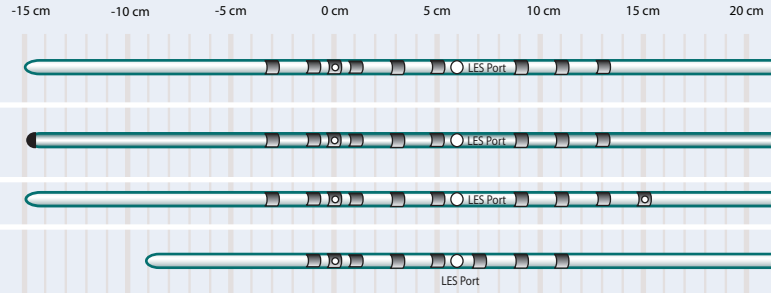
Drawings are not to scale

## ComforTec Z/pH Probes (Single-Use)

### Internal Reference

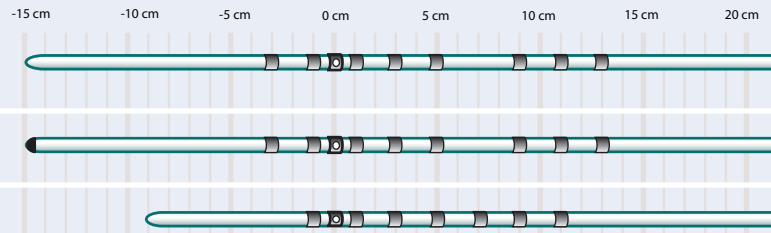
#### Infused

- ZAI-BS-01 ≥18 cm esophageal length, 6 impedance, 1 pH channel, diameter 6.9 FR / 2.3 mm.
- ZAI-BG-44 Gastric, ≥18 cm esophageal length, 6 impedance, 2 pH channels, -15 & 0 cm, diameter 6.9 FR / 2.3 mm.
- ZAI-BD-31 6 impedance, 2 pH channels, 0 & 15 cm, diameter 6.9 FR / 2.3 mm.
- ZPI-BS-46 15-18 cm esophageal length, 6 impedance, 1 pH channel, diameter 6.9 FR / 2.3 mm.



#### Non-Infused

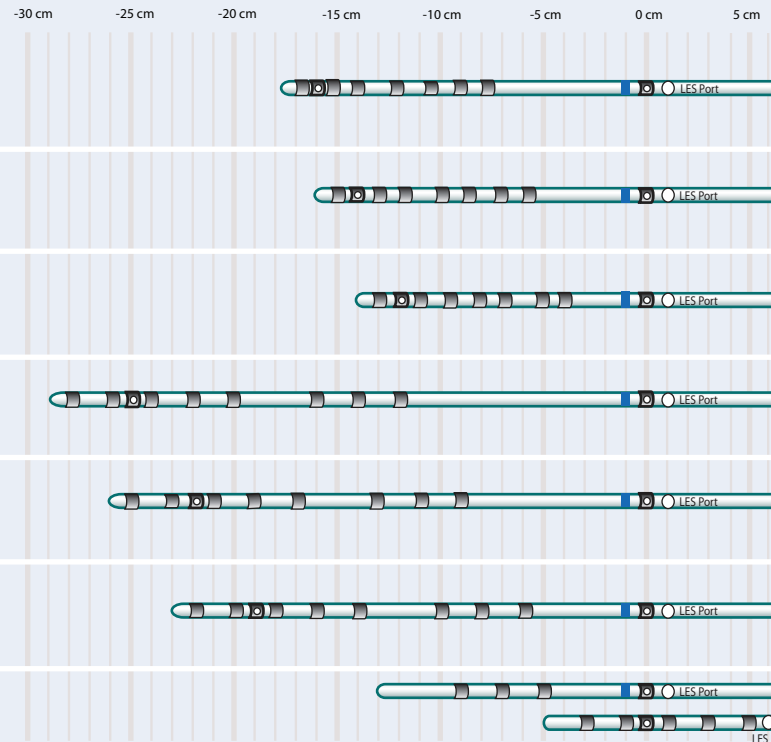
- ZAN-BS-01 ≥18 cm esophageal length, 6 impedance, 1 pH channel, diameter 6.4 FR / 2.13 mm.
- ZAN-BG-44 Gastric, ≥18 cm esophageal length, 6 impedance, 2 pH channels, -15 & 0 cm, diameter 6.4 FR / 2.13 mm.
- ZPN-BS-46 15-18 cm esophageal length, 6 impedance, 1 pH channel, diameter 6.4 FR / 2.13 mm.



### External Reference

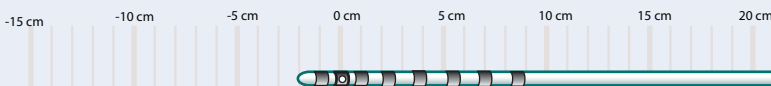
#### Acid LPR

- ZPI-BL-23 Esophageal reflux + acid LPR detection, 17-19 cm esophageal length, 6 impedance, 2 pH channels, -16 & 0 cm, diameter 6.9 FR / 2.3 mm.
- ZPI-BL-24 Esophageal reflux + acid LPR detection, 14-16 cm esophageal length, 6 impedance, 2 pH channels, -14 & 0 cm, diameter 6.9 FR / 2.3 mm.
- ZPI-BL-25 Esophageal reflux + acid LPR detection, 11-13 cm esophageal length, 6 impedance, 2 pH channels, -12 & 0 cm, diameter 6.9 FR / 2.3 mm.
- ZAI-BL-26 Esophageal reflux & LPR catheter, 26-28 cm esophageal length, 6 impedance, 2 pH channels, -25 & 0 cm, diameter 6.9 FR / 2.3 mm.
- ZAI-BL-27 Esophageal reflux + acid LPR detection, 23-25 cm esophageal length, 6 impedance, 2 pH channels, -22 & 0 cm, diameter 6.9 FR / 2.3 mm.
- ZAI-BL-28 Esophageal reflux + acid LPR detection, 20-22 cm esophageal length, 6 impedance, 2 pH channels, -19 & 0 cm, diameter 6.9 FR / 2.3 mm.
- ZAI-BL-48 Esophageal reflux & acid LPR detection, universal bifurcated, 6 impedance, 2 pH channels, diameter 6.9 FR / 2.3 mm.



#### Non-Infused

- ZIN-BS-45 <15 cm esophageal length, 6 impedance, 1 pH channel, diameter 6.4 FR / 2.13 mm.



Drawings are not to scale



Sandhill Scientific, Inc • 9150 Commerce Center Circle, #500  
Highlands Ranch, CO 80129 USA • 800.468.4556 303.470.7020 Fax: 303.470.2975

